

HONDA
ENGINES

GD 411

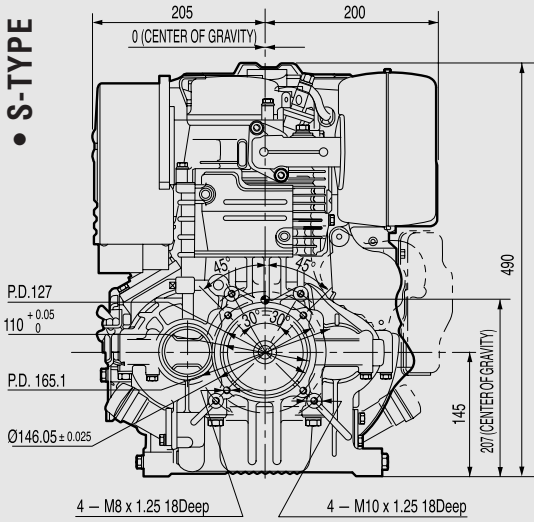
6.6 kW (9 HP) / 3 600 min⁻¹

Diesel engine

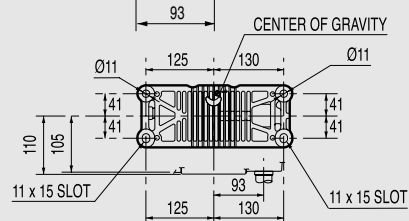
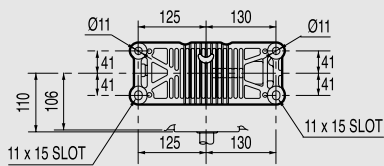
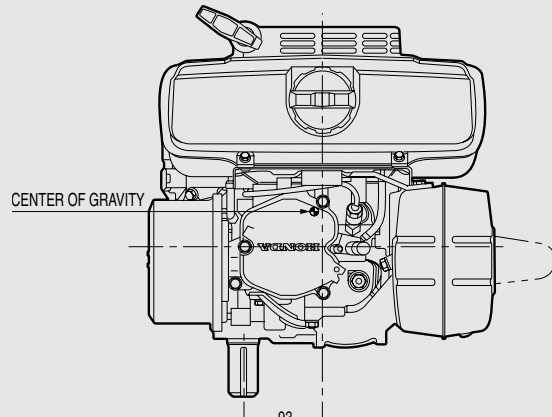
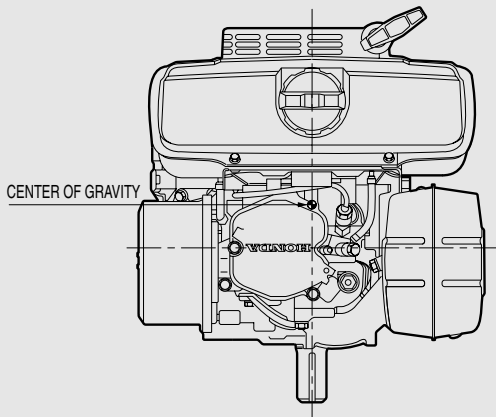
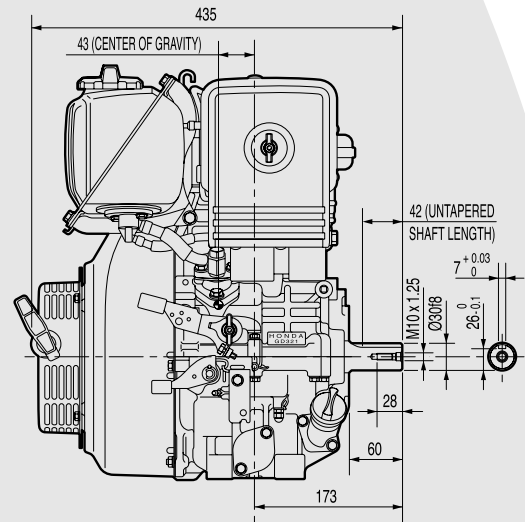
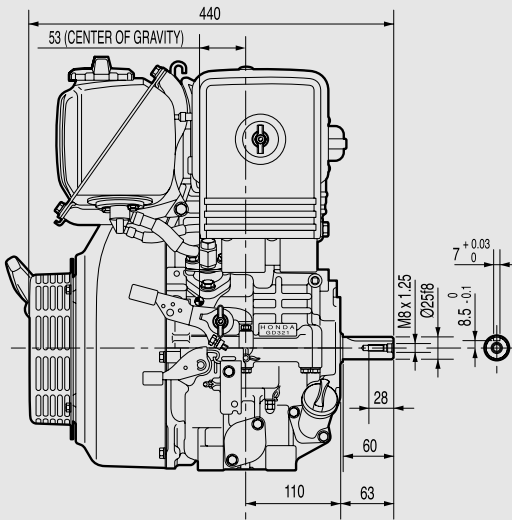
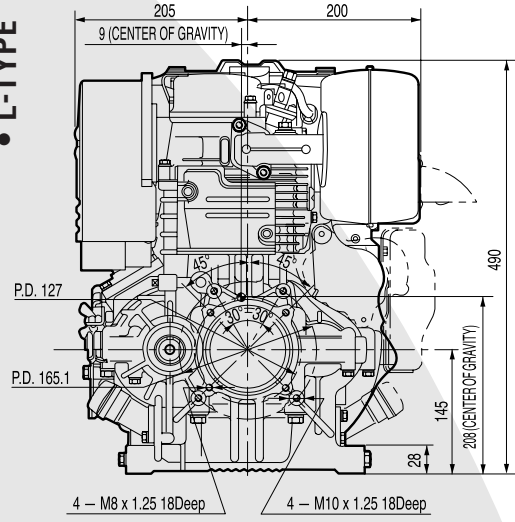
- Moteur diesel
- Dieselmotor mit horizontaler Kurbelwelle
- Motore diesel



• **S-TYPE**

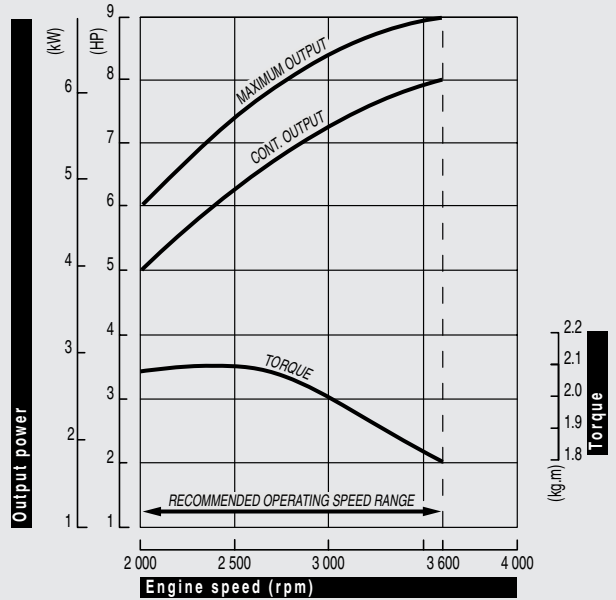
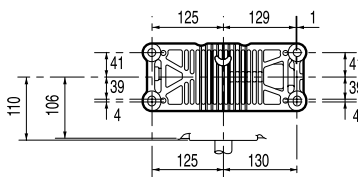
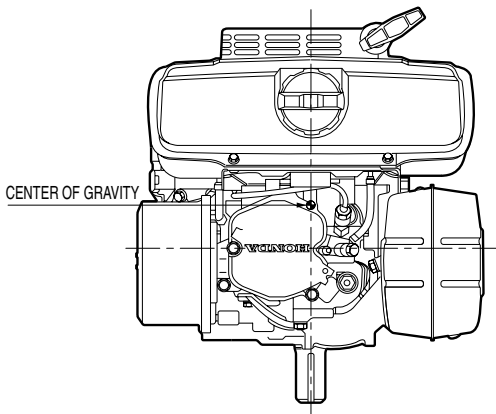
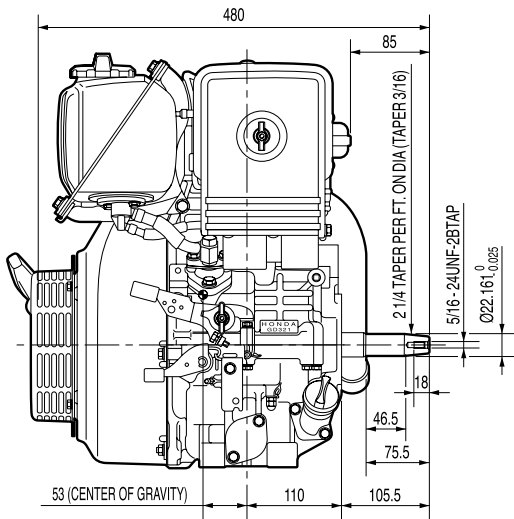
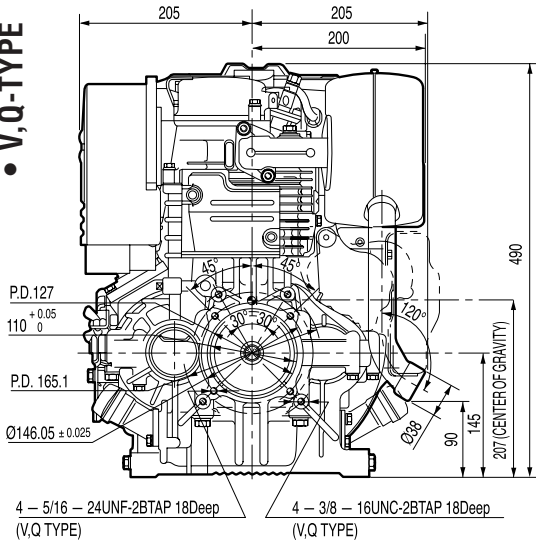


• **L-TYPE**



POWERED by
Honda Engines

• V, Q-TYPE



Performance curve

Horsepower rated in accordance with SAE J1349 (Net)

For continuous operation, the BHP load should be less than 85% of maximum BHP

Courbe de puissance

Puissance mesurée selon SAE J1349 (Net)

Pour une opération continue, la charge devrait être moins de 85% de la courbe "maximum BHP"

Leistungsangabe

Leistung gemessen nach SAE J1349 (Net)

Für Dauerbetrieb sollte die Last weniger als 85% der "maximalen Leistungsangabe (max. BHP)" sein.

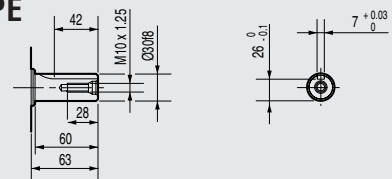
Curva di potenza

Potenza in conformità allo standard SAE J1349 (Net)

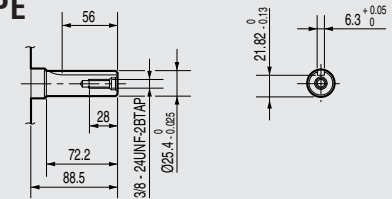
Per uso continuativo, la potenza prelevata dovrà essere del 85% inferiore, rispetto a quella indicata nella curva "maximum BHP".

PTO SHAFT DIMENSIONS

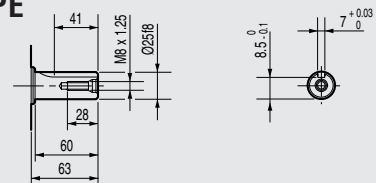
• L-TYPE



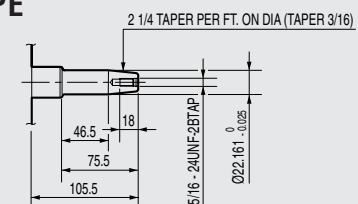
• Q-TYPE



• S-TYPE



• V-TYPE



GD 411



Specifications

Model	GD 411
Engine type	Air cooled 4 stroke OHV, diesel engine, horizontal shaft
Bore x stroke	82 x 78 mm
Displacement	411 cm ³
Compression ratio	18.2 : 1
Max. power output	6.6 kW (9 HP) / 3 600 rpm
Maximum torque	20.6 Nm / 2.1 kgm / 2 500 rpm
Injection system	Direct injection (2-staged DI)
Starting system	Recoil (electric start optional)
Fuel tank capacity	4.6 l
Specific fuel cons.	242 g/kW.hr - 178 g/HP.hr
Engine oil capacity	1.25 l
Dimensions (L x W x H)	440 x 405 x 490 mm
Dry weight	54 kg

Spécifications techniques

Modèle	GD 411
Type du moteur	Moteur diesel monocylindre 4 temps OHV, refroidissement à air, arbre de sortie horizontal
Alésage x course	82 x 78 mm
Cylindrée	411 cm ³
Taux de compression	18.2 : 1
Puissance maxi	6.6 kW (9 ch) / 3 600 tr/mn
Couple maximal	20.6 Nm / 2.1 kgm / 2 500 tr/mn
Système d'injection	Injection directe (2-staged DI)
Système de démarrage	Lanceur (démarreur électrique en option)
Cap. du réservoir de gasoil	4.6 l
Cons. de gasoil spéc.	242 g/kW.h - 178 g/ch.h
Capacité d'huile moteur	1.25 l
Dimensions (L x l x H)	440 x 405 x 490 mm
Poids à sec	54 kg

All specifications are subject to change without notice. Les caractéristiques techniques peuvent être modifiées à tout moment et sans préavis.

Spezifikationen

Modell	GD 411
Motortyp	Luftgekühlter 1-Zylinder 4-Takt OHV, Dieselmotor, horizontale Kurbelwelle
Bohrung x Hub	82 x 78 mm
Hubraum	411 cm ³
Verdichtung	18.2 : 1
Höchstleistung	6.6 kW (9 PS) / 3 600 min ⁻¹
Max. Drehmoment	20.6 Nm / 2.1 kgm / 2 500 min ⁻¹
Zündsystem	Direkteinspritzung (2-staged DI)
Starter	Reversierstarter (Elektrostart Sonderausstattung)
Tankinhalt	4.6 Liter
Spez. Kraftstoffverbrauch	242 g/kWh - 178 g/PSH
Motorölkapazität	1.25 Liter
Maße (L x B x H)	440 x 405 x 490 mm
Trockengewicht	54 kg

Dati tecnici

Tipo	GD 411
Tipo di motore	Motore monocilindrico OHV ad albero orizzontale, diesel, 4 tempi, raffreddamento ad aria forzata
Alesaggio x corsa	82 x 78 mm
Cilindrata	411 cm ³
Rapporto di compressione	18.2 : 1
Potenza massima	6.6 kW (9 CV) / 3 600 giri/min
Coppia massima	20.6 Nm / 2.1 kgm / 2 500 giri/min
Sistema iniezione	Iniezione diretta (2-staged DI)
Avviamento	A strappo con autoavvolgente (elettrico opzionale)
Capacità serbatoio	4.6 l
Consumo combustibile	242 g/kWh - 178 g/CVh
Capacità coppa olio	1.25 l
Dimensioni (Lu x La x A)	440 x 405 x 490 mm
Peso a secco	54 kg

Le specifiche sono soggette a cambiamento senza preavviso. Die Spezifikationen können ohne Vorankündigung geändert werden.

Ref. EEC - TS 99/08 - GD 411

hella@iohta.com

Germany • Honda Engines / Selling agent
Honda Logistik Center Deutschland GmbH
Sprenölinger Landstraße 166
D-63069 Offenbach/Main
TEL: + 49 (0)6 98 30 95 17
FAX: + 49 (0)6 98 30 91 28

United Kingdom • Honda Engines / Selling agent
Honda Logistics Centre (UK) Ltd.
Unit 3210, Wellington Parkway,
Magna Park Lutterworth,
Leicestershire LE 17 4JQ United Kingdom
TEL: + 44 (0)1 45 55 59 429
FAX: + 44 (0)1 45 55 59 428

HONDA
ENGINES

Honda Europe NV
EUROPEAN ENGINE CENTER
Langerbruggestraat 104 • B-9000 Gent
TEL: + 32 (0)9 250 12 11 • FAX: + 32 (0)9 250 14 24

Italy • Honda Engines / Selling agent
Honda Logistic Centre Italy S.P.A.
Via Strà, 153
I-37030 Colognola ai Colli (VR)
TEL: + 39 04 56 17 33 41
FAX: + 39 04 56 15 12 70

Franca • Honda Engines / Product information center
Parc d'Activités de Pariest
Allée du 1er Mai
Croissy Beaubourg
F-77313 Marne-La-Vallée Cedex 13
TEL: + 33 (0)1 60 37 31 18
FAX: + 33 (0)1 60 37 33 66